



NEW HORIZONS COUNTRY DAY SCHOOL

THREES NOVEMBER MONTHLY NEWSLETTER



FINE MOTOR: During the month of November the students will be working on their fine motor skills by cutting, folding paper, stacking cubes, gluing and painting on an easel. The students will work as a team and make a classroom quilt as part of our Caring & Sharing Unit. As part of their homework for the week of 11/16 your child will be bringing home an Art Paper on Friday (11/13) for you and your child to make a family collage. This is an important part of our Homes and Family Unit which your child will be sharing with the whole class.

LANGUAGE: Language development will include story time. We will be learning about the differences between young and old and identifying different family members. We will continue to introduce open ended questions and to use more expanded vocabulary with the introduction of adjectives and adverbs. The students will also be reviewing the colors yellow, brown and the letters H,Q,C,Y.

MATHEMATICS: Our math skills will involve counting 1-10 as well as one to one correspondence using up to ten objects and sorting objects. As part of our family unit the students will also be practicing their home phone numbers. The class will continue with grading and we will also be introduced to the terms: how many, equal, fewer and more than. Our shape for the month is a square and our numbers for review are 1,2,3,4,5.







SCIENCE: As part of our sharing and caring month we will be talking about families and how we celebrate Thanksgiving. The students will be practicing table setting in anticipation of Thanksgiving. We hope you will allow your child to help with this tradition at home. In our Social/Science centers we will be discussing "Life on the Farm".



PLEASE HELP WITH OUR FOOD DRIVE. FAMILIES ARE IN NEED OF OUR HELP MORE THAN EVER THIS YEAR. PLEASE SEE THE BACK OF THE NEWSLETTER FOR SUGGESTIONS.



THREES NOVEMBER 2015

	MONDAY	TUESDAY	WEDNESDAY	THURSDAY	FRIDAY
Letter C – Community Helpers	2 FOOD DRIVE 	3 FOOD DRIVE 	4 FOOD DRIVE 	5 FOOD DRIVE 	6 FOOD DRIVE 
Letter Y – Life on the Farm - Young & Old	9	10 Book Fair 8:00 am-9:30am 3pm-5:30 pm	11 Book Fair 8:00 am-9:30am 3pm-5:30 pm	12 Book Fair 8:00 am-9:30am 3pm-5:30 pm	13 Book Fair 8:00 am-9:30am Family Homework Paper Goes Home
Letter H & Q-Homes & Family continued, Table Setting & Manners. Make a Classroom Quilt.	16	17	18	19 Pizza Day Wear your  NHCS t-shirt	20 Thanksgiving Feast
Letter & Math Review Thanksgiving	23	24	25 SCHOOL CLOSED	26 SCHOOL CLOSED	27 SCHOOL CLOSED
Holidays Around The World	30				



SHARE YOUR CUPBOARD

NOVEMBER 2nd-6th

An annual tradition at New Horizons has been our Canned Goods Drive. We collect food for the needy families in our community. Your past support of this collection has been terrific and we hope your children won't miss this opportunity to feel the true sharing spirit of the season by giving to those who are less fortunate.

Donations of food may be dropped off in your child's classroom, the Great Room or the front lobby Monday through Friday Nov. 2nd thru the 6th

Suggested foods: boxed mashed potatoes, stuffing, canned vegetables & fruits, gravy, muffin or corn bread mix, powdered or canned milk, pastas and sauce, macaroni and cheese, canned meats, tuna fish, boxed cereal, rice and beans, flour, soups, or juice.

Non-perishable boxed, canned and plastic containers only.



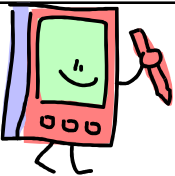
**REMINDER
SCHOOL WILL BE CLOSED
FOR
THANKSGIVING
NOVEMBER 25th-27th**



**PRESCHOOL THANKSGIVING FEAST
FRIDAY, NOVEMBER 20th**

In keeping with the holiday, Thanksgiving and our "Caring and Sharing Unit", your child's class will be preparing a wonderful dessert to have with their lunch. Please send in your child's regular lunch minus the dessert.

***IF YOU WOULD LIKE TO DONATE THE
INGREDIENTS FOR YOU CHILD'S SPECIAL
DESSERT PLEASE CHECK YOUR CHILD'S
CLASSROOM FOR SIGN UP SHEETS.***



Research Highlight on the Effects of Media on Children

- The more time children use screens in the early years, the more they tend to protest turning them off when they are older.
- Toddlers' use of screens have been connected to the following problems in later childhood: 1) lower math and school achievement 2) reduced physical activity and 3) higher levels of obesity.
- Screen time for children younger than 3 years old has been associated with irregular sleep patterns and delayed language acquisition.
- Increased screen exposure in early childhood has been connected with higher levels of aggression.
- Children who have two or more hours of screen time a day tend to exhibit more psychological difficulties, such as 1) hyperactivity 2) emotional and behavior problems and 3) difficulties with peers.
- Media violence can contribute to 1) aggressive behavior 2) desensitization to violence 3) nightmares and 4) fear of being harmed.
- The more time children spend with screens, the less time they spend engaged in creative play, which is a key foundation for later learning, constructive problems solving and creativity.

Note: The facts in this box come from Campaign for a Commercial-Free childhood.

BACK GATE SAFETY



Please do not allow your child to push the **green gate button**. This is for the safety of all our children. Many times your child will run ahead of you - push the green button and run out the gate into our parking lot leaving our gate open. Not only is your child at risk in the parking lot but many times another child will follow your child out the gate.

CHILDREN ARE NOT ALLOWED TO PUSH THE GREEN GATE BUTTON

Please close the gate when leaving. If you are at the gate and someone asks you to let them in because they forgot their card and you are not sure if they are a part of our New Horizons family, please do not allow them to enter. Find a staff member who can verify that they are a member or direct them to the front office off Nebraska Avenue.



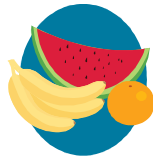
5 A DAY The Color Way

By eating your colors every day you will stay fit and healthy. Colorful fruits and vegetables contain many of the nutrients, minerals and phytochemicals your body needs to maintain good health and energy. They also protect against the effects of aging and can help reduce the risk of some of the major lifestyle diseases. Many of the phytochemicals and other compounds that make fruits and vegetables such healthy foods also give them their color. There are many different phytochemicals and compounds associated with the color - so to ensure you get a wide range of them you need to try and eat fruits and vegetables from each of the color groups each day. A new food may need to be introduced 6 - 12 times before a child decides if they will like it. Don't give up! To ensure the health of your loved ones, serve and encourage **5 A DAY** for better health.

What is a serving?

Age 1 - 3

- 1/2 medium fruit
- 1/4 cup cut-up vegetables
- 4 oz 100% fruit or vegetable juice
- 1/4 cup cooked vegetables
- 1/2 cup leafy greens
- 1/4 cup potatoes
- 1/4 cup peas or beans
- Dried fruit not recommended



Age 4 - 6

- 1 medium fruit
- 1/2 cup cooked vegetables
- 1 cup leafy greens
- 1/2 cup potatoes
- 1/2 cup peas or beans
- 1/4 cup dried fruit



FOCUS ON FUNDAMENTALS

Fostering Tolerance and Respect

Children are born without biases about other people of any race, culture, gender, or disability. We sometimes wonder if we can raise our own children free of prejudice. Unfortunately, it doesn't work this way; society's messages are too pervasive. As parents and teachers, we need to take positive action if children are to grow up comfortable with who they are *and* be respectful of others.

We want to work with you to create a program that helps to counter society's messages of bias and reflect the cultural background of all children and families. To begin with, we choose books, dolls, and even pictures on the wall, with an eye to finding balance and showing children what they see too little of elsewhere. For instance, we make a point of showing men and women of all ethnic backgrounds doing a variety of jobs, men as well as women doing household chores and spending time with children and different kinds of families enjoying themselves.

Are we doing all this to be "politically correct"? Not really. We're committed to helping children grow up confident of their own identity and to be respectful to other people and aware of the rich diversity of their community and world.



BOOK FAIR

NOVEMBER 10th, 11th, 12th, 13th



HOURS OF OPERATION:
8:00a m to 9:30am (Tuesday - Friday)
3pm to 5:30 pm (Tues. - Thursday)

WHERE: OUR GREAT ROOM

This is a perfect time to get some of your Holiday Shopping done early!!!

